

# The NYSAC Workforce Intelligence Project

Isabelle Andrews  
Project Director



**NYSAC**  
NEW YORK STATE  
ASSOCIATION OF COUNTIES

# *What is the Workforce Intelligence Project?*

- Funded by a Grant from NYSDOL to NYSAC
- Goal: Counties, Regions can better direct their economic futures
- Two prong approach
  - Develop a systematic method to better identify industry trends on a regional basis.
  - develop local strategies and action steps to address those trends.



**NYSAC**  
NEW YORK STATE  
ASSOCIATION OF COUNTIES



**NYSAC**  
NEW YORK STATE  
ASSOCIATION OF COUNTIES

# How this will be accomplished

- Grassroots: tools for local leaders to use to direct their own economic futures.
- Create models of workplace forecasting
- Design Research that Makes sense
- Mobilize Key Players
- Develop Learning Through Local Experience



**NYSAC**  
NEW YORK STATE  
ASSOCIATION OF COUNTIES

# Create Models of Workplace Forecasting

The model will identify:

- Declining and expanding business sectors
- Economic analysis of the region
- Financial analysis of industries
- An analysis of the skill needs of businesses
- Skills of the workers in the declining industries.



**NYSAC**  
NEW YORK STATE  
ASSOCIATION OF COUNTIES

# Design Research that Makes Sense

- Industry trend forecasting
- User friendly guide on the best use of economic data



NYSAC

NEW YORK STATE  
ASSOCIATION OF COUNTIES

# Mobilize the key players

- Snap-shot economic data
- CLEOs designate a “Leadership Team” of key policy makers.
- Look at the data, and examine implications for the region.



**NYSAC**  
NEW YORK STATE  
ASSOCIATION OF COUNTIES

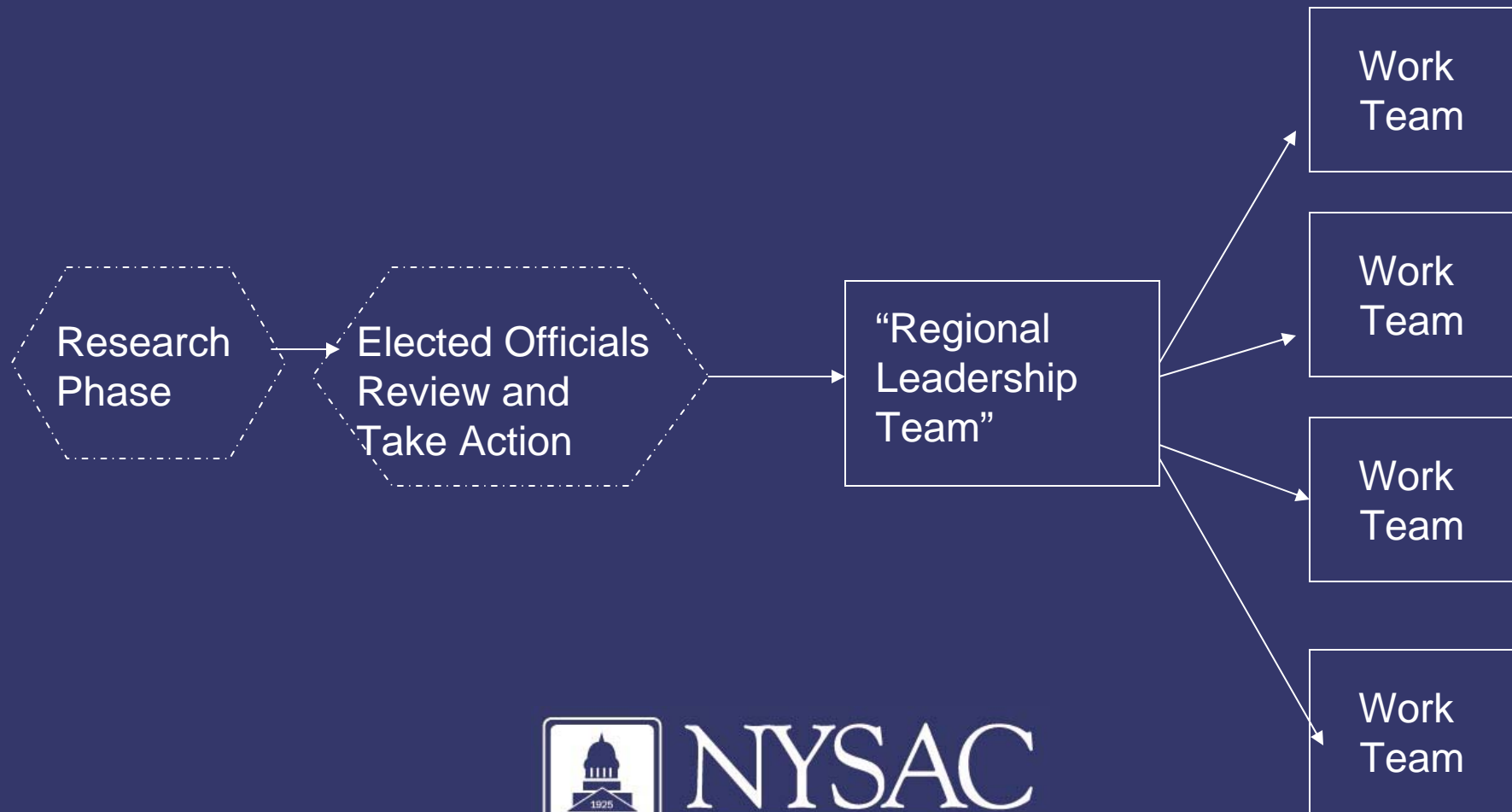
# More about the Key Players

- NYSAC will provide facilitation for the meetings of the Leadership Team
- We'll also help with implementation of these plans and track their progress.
- This is about the players in the region designing their own approach.



**NYSAC**  
NEW YORK STATE  
ASSOCIATION OF COUNTIES

# How this will possibly work...



**NYSAC**  
NEW YORK STATE  
ASSOCIATION OF COUNTIES

# Develop Learning Through Experience

- Pilots: Starting in the Southern Tier
- Test approaches
- Spread the learning around the state



NYSAC

NEW YORK STATE  
ASSOCIATION OF COUNTIES

What's different about this approach?



**NYSAC**  
NEW YORK STATE  
ASSOCIATION OF COUNTIES

# Where are we now?

- Pilot has begun in the Southern Tier.
- Cornell University conducted a study of Advanced Manufacturing in Electronics.
- Present the findings to Chief County Elected Officials in the Region.



**NYSAC**  
NEW YORK STATE  
ASSOCIATION OF COUNTIES

# Next Steps

- Mobilize the key players
- More research in the Southern Tier.
- Spread the Learning



**NYSAC**  
NEW YORK STATE  
ASSOCIATION OF COUNTIES

# For more information...

Isabelle Andrews

Workforce Intelligence Project Director

NYSAC

(518) 465-1473

[iandrews@nysac.org](mailto:iandrews@nysac.org)



**NYSAC**  
NEW YORK STATE  
ASSOCIATION OF COUNTIES