



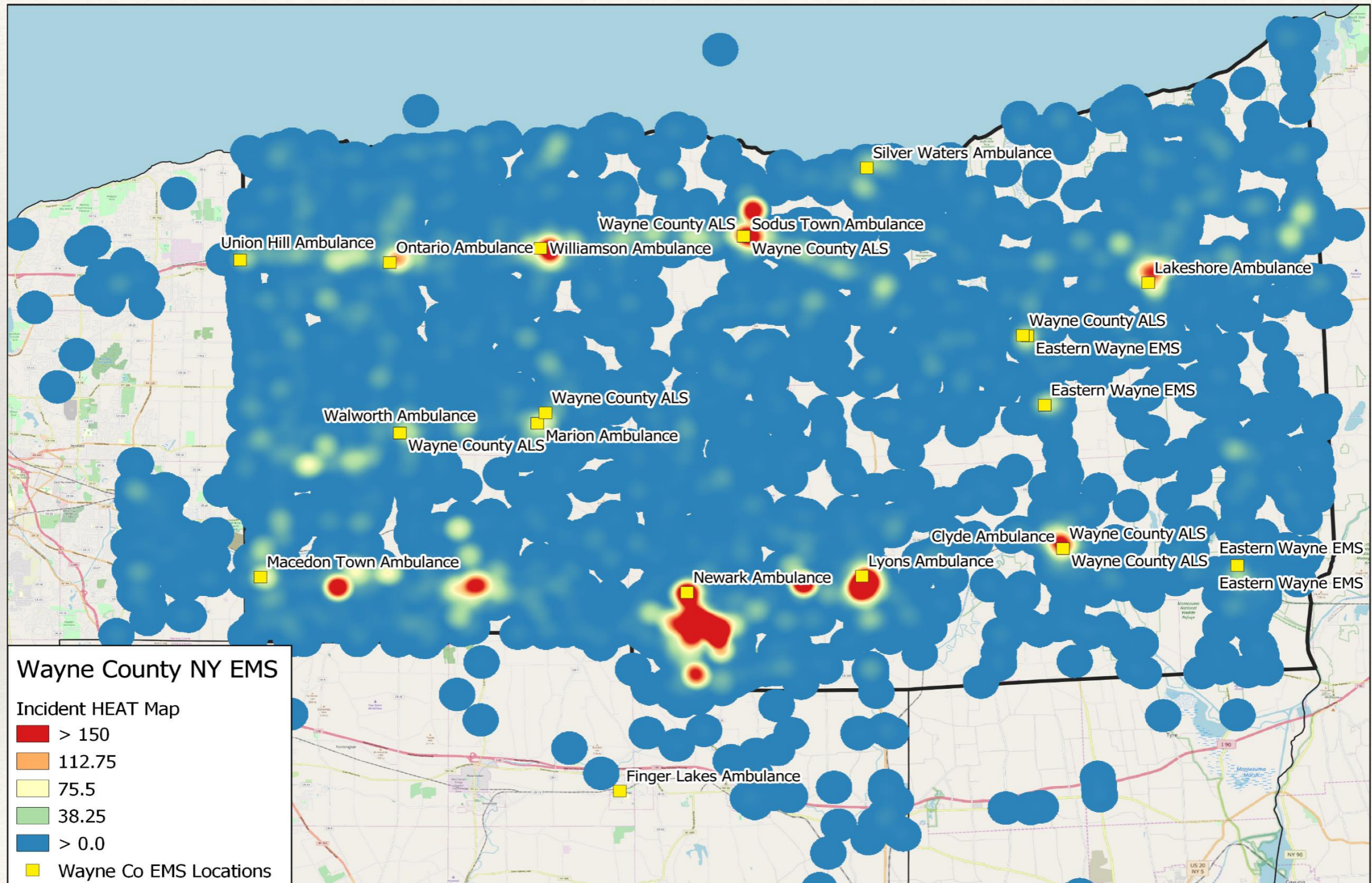
EMERGENCY MEDICAL
SERVICE INITIATIVE

WAYNE COUNTY, NEW
YORK

EMS System in Wayne County

- ❖ 22 transporting EMS agencies in 2002 → 8 currently
- ❖ One commercial presence → Finger Lakes Ambulance
- ❖ 13,500 calls for service w/o interfacility transports
- ❖ ALL agencies utilized paid staff, most 24/7 to the extent possible
- ❖ Fitch System Study conducted in 2020
- ❖ Response times similar to 1999 study

EMS Related-Distribution of Risk



What Studies Will Show.....

- ❖ EMS SYSTEMS AND AGENCIES LACK:
- ❖ People
- ❖ Funding

Wayne County EMS

- ❖ County entered the EMS Field in 2002 with WC ALS
- ❖ “Fly Car” system to assist the transporting ambulances
- ❖ Started with 2 fly cars in service M-F 6 am to 6 pm
- ❖ Now have up to 7 fly cars in service 24/7
- ❖ 2022: 6100 fly car calls, \$1.5 million in County expense

Wayne County's Choice

- ❖ With rising costs for the fly car operation, and response times not improving
- ❖ Our Board of Supervisors decided to start a transporting EMS system, while continuing to support the remaining EMS agencies through the Paramedic fly car system

What We're Doing

- ❖ Constructing four bases of operation
- ❖ Purchasing nine ambulances
- ❖ Continuing to support the remaining EMS agencies
- ❖ **Establishing a system that can function as the primary EMS provider agency for any portion, or all, of the county....OR can function in support of the remaining agencies**

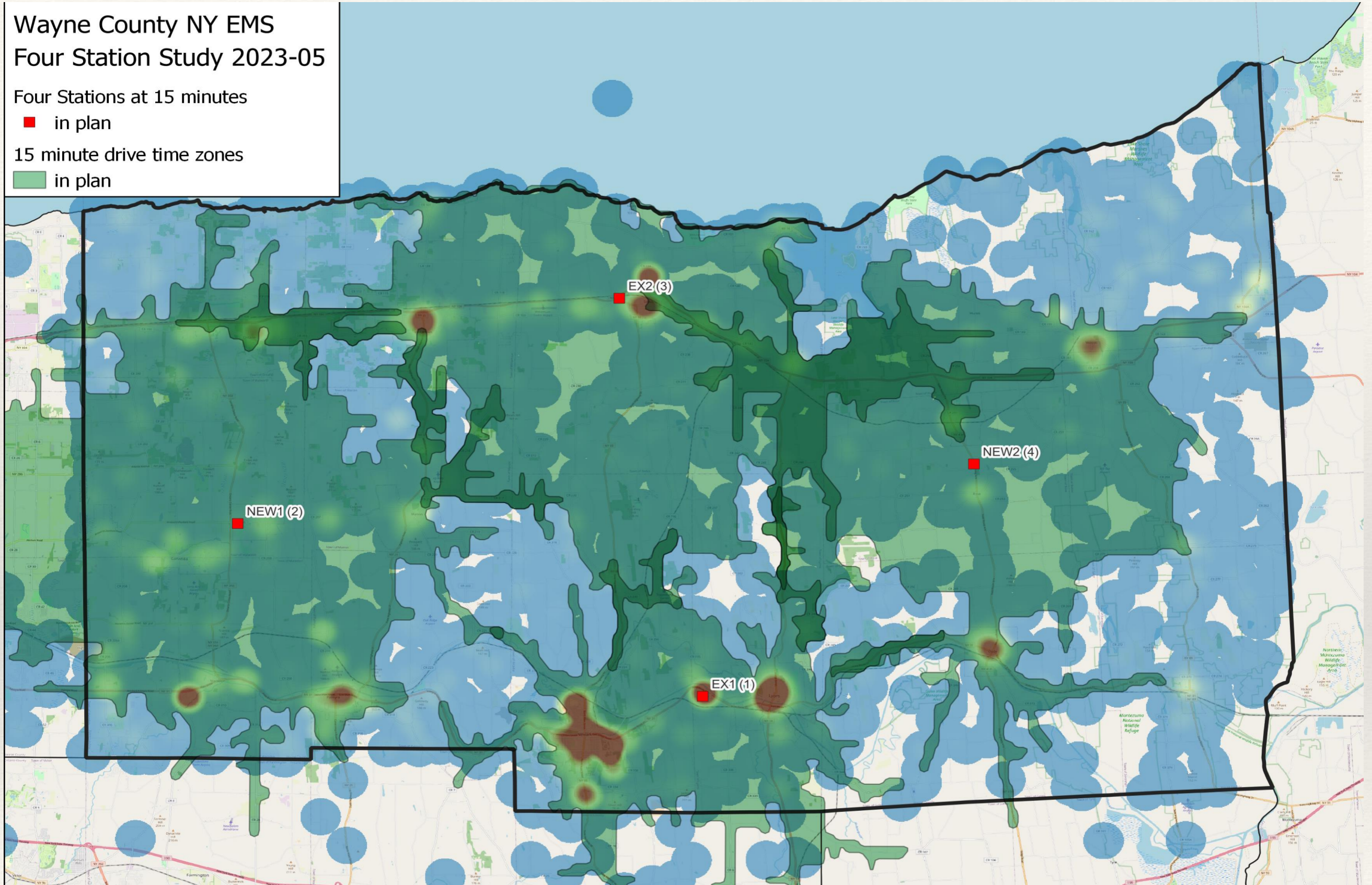
Wayne County NY EMS Four Station Study 2023-05

Four Stations at 15 minutes

■ in plan

15 minute drive time zones

■ in plan





WAYNE COUNTY
LYONS MI HEADQUARTERS







WAYNE COUNTY
EMERGENCY MEDICAL SERVICES

WN-3

WAYNE COUNTY
EMERGENCY MEDICAL SERVICES

WN-3



WN-3

The Price Tag...

- ❖ Lyons base construction \$5.8M
- ❖ Each new ambulance \$220K → \$250K
- ❖ 2024 Operational Costs \$4.8M appropriations
\$1.2M revenue
\$3.6M County cost

A County's Options.....

- ❖ Actively Monitor the System
 - ❖ Response times
 - ❖ Dropped calls
- ❖ Provide Indirect Support
 - ❖ Coordinate agencies, mutual aid, establish joint authority
 - ❖ Establish group buying
 - ❖ Provide education CME, EMT, Paramedic
- ❖ Provide Support through Service
 - ❖ Paramedic fly car
 - ❖ Staff agencies
- ❖ Provide Direct Financial Support
- ❖ Establish a Transporting Service in Support of Existing Agencies
- ❖ Establish a Primary Transporting EMS System